

INSTALLATION INSTRUCTIONS
V-170-K SOLENOID VALVE KIT
FOR KAHLENBERG K-380 or K-460 AIR HORN

REFERENCES: Drg. 3-6510

CONTENTS:

- (1) V-69 Solenoid Valve, Item #3
- (1) V-69-P Valve Din Connector Plug, Item #1
- (1) P516-19 Tube Connector, 1/8" NPT x 1/8" O.D. Tube, Item #2
- (1) P516-36 Tube Connector, Barbed, 1/8" NPT x 1/8" I.D. Tube, Item #4
- (3 ft.) PT130-014 Clear PVC Tubing, 1/8" I.D., Item #5
- (1) P516-34 Nylon "Y" Barbed Fitting, 1/8" Tube, Item #6
- (1) V-69-B Mounting Bracket with M3 x 8mm Screws and Washers

1. MOUNTING:

Mount the valve as close to the horn as possible, using the clear PVC tubing and fittings provided per Drawing 3-6510. Please note the arrow on the side of the valve body that indicates the direction of air flow. The arrow should be pointed in the direction of air flow to the horn.

2. PIPING:

Thoroughly blow out all air lines before connecting the valve tubing. The air supply (up to 150 PSI) should be connected to the inlet on the valve body using the P516-19 instant connect tube fitting supplied. Do not use teflon tape or thread sealing compound on this connection as the smallest amount may cause the valve to malfunction if it gets in the operating mechanism. With the small amount of air flow demanded by the K-380 air horns, an air filter generally will not be necessary unless the air supply is known to be "dirty". The barbed fitting for use with the clear PVC tubing is installed on the exhaust side of the valve. The included mounting bracket can be used to secure the valve to any clean surface.

3. WIRING:

Positive and negative (ground) wiring connections are made within the V-69-P Valve Plug. Connections are made to the internal screw terminals that correspond to the two parallel male terminal posts on the V-69 Valve coil. The third post which is perpendicular to the other two is a ground terminal, left unused for D.C. installations. Polarity of the D.C. connection is not a concern, so it does not matter which of the parallel posts is used for the positive connection. Any low voltage momentary switch (such as the Kahlenberg M-126 Push Button, Item #17 on Drawing 3-6406) can be used to actuate the V-170-K Valve. See Drawing 3-6406 and 3-6510 for switch wiring connections.

TROUBLESHOOTING:

1.) If the solenoid valve does not function, check wiring details. If wiring is correct, and the correct voltage is being supplied to the valve, debris in the air line may have clogged the valve. This is the most common cause of valve malfunction. It may be possible to clear the valve by removing the barbed tube fitting and tube from the exhaust side and repeatedly operating the valve under full pressure.

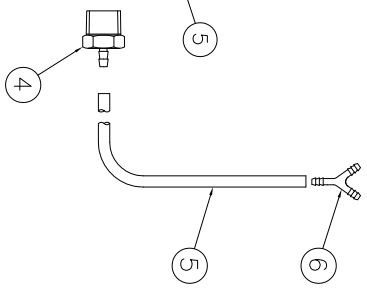
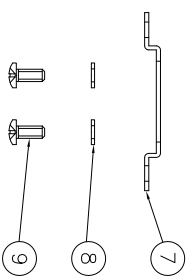
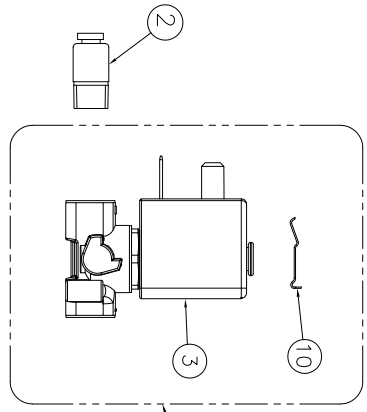
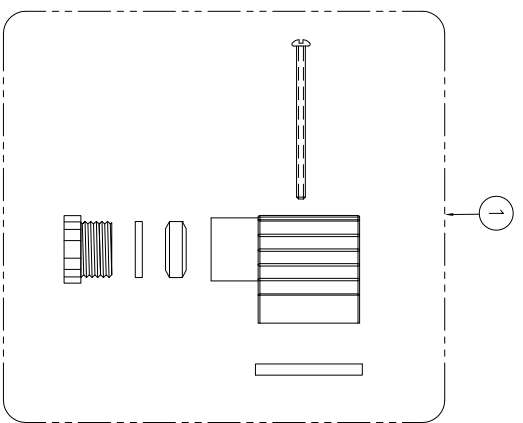
For assistance, please contact Kahlenberg Industries customer service at:

Ph: 920-793-4507

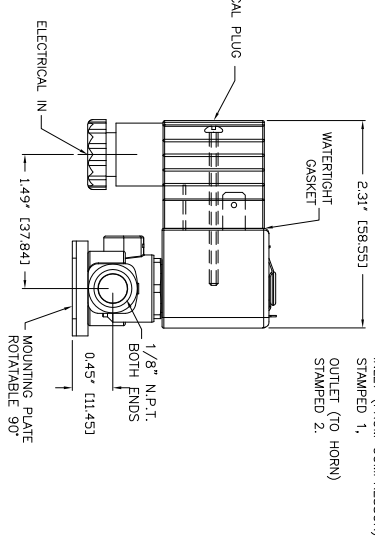
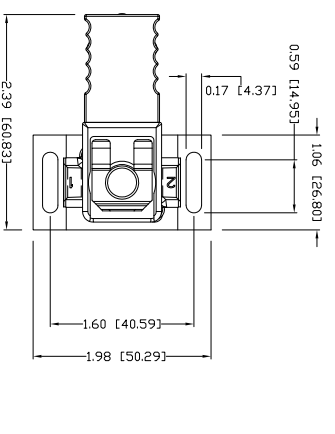
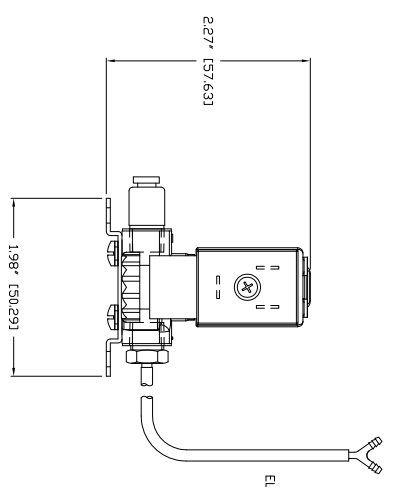
Fx: 920-793-1346

e-mail: info@kahlenberg.com

Kahlenberg Industries, Inc.
1700 12th Street, P.O. Box 358
Two Rivers, WI 54241, U.S.A.



NO.	PART NO.	DESCRIPTION	QTY.
1	V-69-P	PLUG, SOLENOID VALVE	1
2	P516-19	CONNECTOR, MALE, 1/8" X 1/8" O.D. TUBE	1
3	V-69	SOLENOID VALVE WITH COIL, 1/8" NPT	1
4	P516-36	CONNECTOR, 1/8" NPT X 1/8" I.D. TUBE, BARBED	1
5	PT130-14	TUBING, PVC, CLEAR, 1/8" I.D.	3'
6	P516-34	CONNECTOR, "r" 1/8" I.D. TUBE, BARBED	1
7	V-69-B	MOUNTING BRACKET	1
8	W100-004ST	WASHER, FLAT M3	2
9	W078-038ST	SCREW, PAN HD. M3 X 8MM X 15MM PITCH	2
10	V-69-R	RETAINING SPRING	1



REV.	BY	DATE	DESCRIPTION	APP'D.
A	ZN	02/15/10	ITEM 4 WAS P516-20 ITEM 5 WAS PT130-11 ITEM 6 WAS P516-34	EMK
B	ZN	01/15/13	ITEM 1 WAS V-170-P ITEM 2 WAS P516-18 ITEM 3 WAS V-170 ITEM 4 WAS P516-35 ADDED ITEMS 7, 8 & 9	EMK
C	ZN	08/23/16	UPDATED FOR NEW VALVE	EMK

COIL VOLTAGES
 12 V.D.C. 6.9 WATTS
 24 V.D.C. 6.9 WATTS
 120 V.A.C. (50/60HZ) 6.9 WATTS

Kahlenberg
 TWO RIVERS, WI. U.S.A.

KAHLENBERG INDUSTRIES, INC.

OUTLINE DIMENSIONS
 & PARTS LIST FOR
 V-170-K VALVE KIT

DR.	DATE	CKD.	SCALE	DRWG. NO.	REV.
ZJN	04/21/09	EMK	N.T.S.	3-6510	C