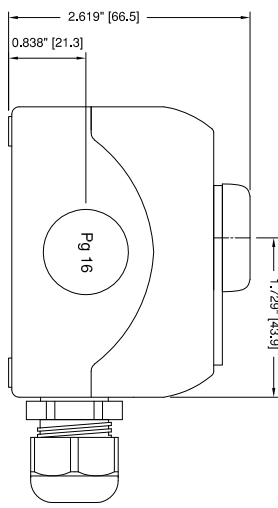
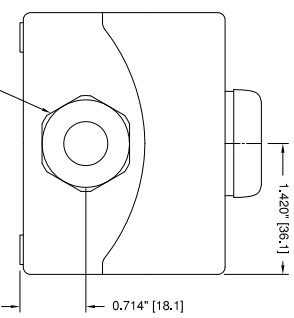
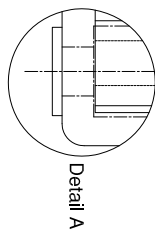
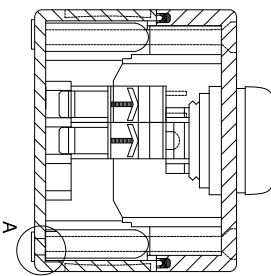
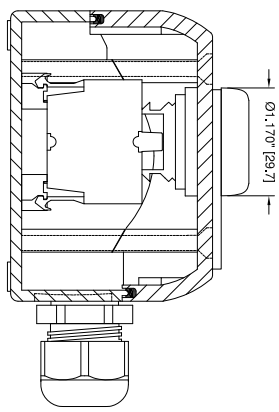
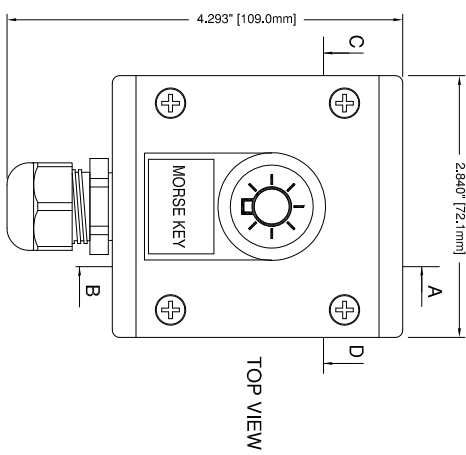
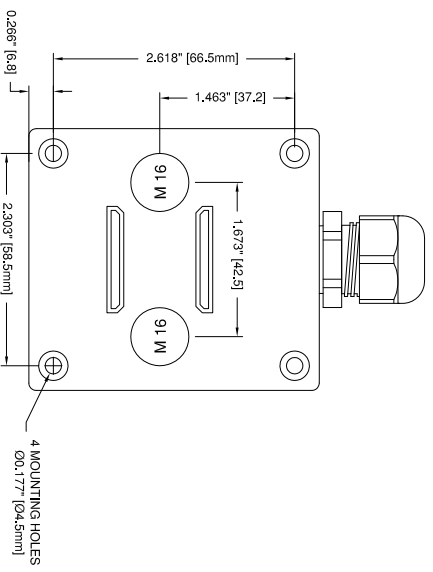


REV.	BY	DATE	DESCRIPTION	APP'D.

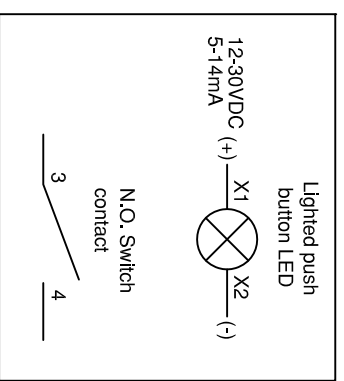


LIQUID TIGHT CONNECTOR
CABLE DIAMETER .24\"/>



SPECIFICATIONS:
Weather proof, push button switch with surface mount enclosure.
TYPE: Momentary N.O., poles circuit: SPST, 10A max. rated contacts.
Maximum 500 Volts @ 2 Amps. Ambient Temperature -25° to 70°C.
Material: plastic body, plastic ring, plated copper contacts.
IEC/EN 60947 conformed, VDE 0660 conformed, CSA certified, UL listed
Ingress of protection: IP 67, 69K (IEC 60 529). NEMA/UL/CSA: 12,13, 3R, 4X

Lighted push button LED: 12-30VDC, 5-14mA



CONFIDENTIAL

INFORMATION CONTAINED HEREIN IS CONFIDENTIAL. IT IS THE PROPERTY OF KAHLBERG INDUSTRIES INC. IT IS TO BE USED SOLELY FOR THE PURPOSE PROVIDED, AND IT IS NOT TO BE DISCLOSED TO OTHERS WITHOUT THE PRIOR WRITTEN CONSENT OF KAHLBERG INDUSTRIES INCORPORATED.



KAHLBERG INDUSTRIES INC. TWO RIVERS, WISCONSIN 54241

OUTLINE DIMENSIONS
M-315 PUSH BUTTON

DR.	DATE	CKD.	SCALE	DRWG. NO.	REV.
ZJN	03/01/13	EMK	N.T.S.	3-6759	

CAGE: 75214
PARTS LIST DRAWING 3-6761