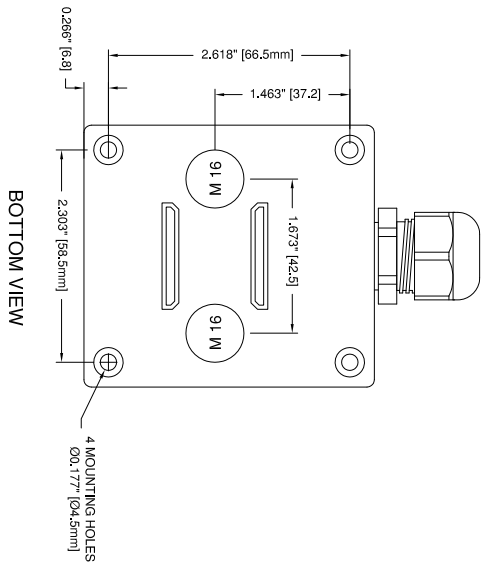
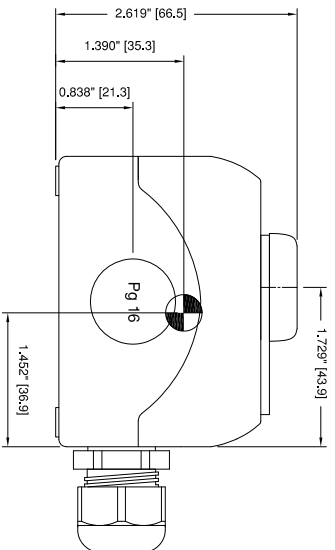
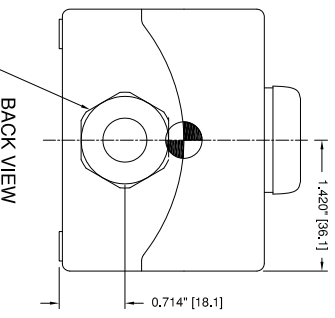
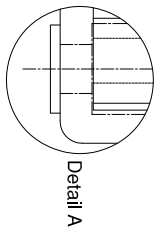
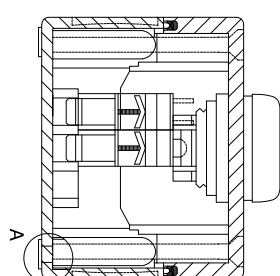
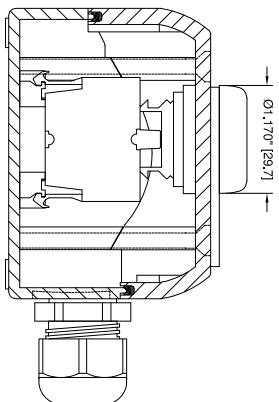
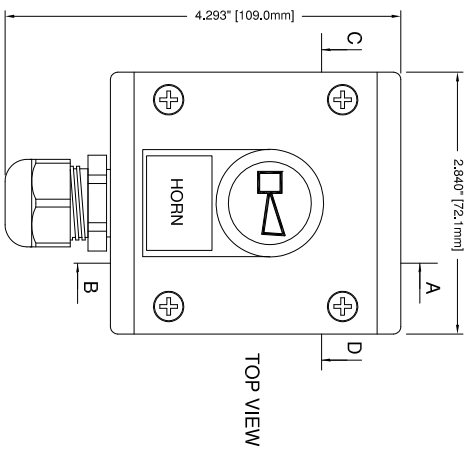


REV.	BY	DATE	DESCRIPTION	APP'D.
A	ZJN	03/24/17	ADDED WEIGHT AND CENTER OF GRAVITY	EMK

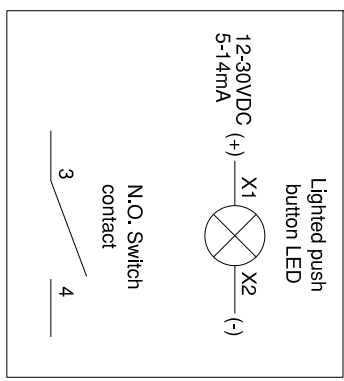


= CENTER OF GRAVITY

Lighted push button LED: 12-30VDC, 5-14mA

SPECIFICATIONS:

Weather proof, push button switch with surface mount enclosure.
 TYPE: Momentary N.O., poles circuit: SPST, 10A max.
 rated contacts, 14-18 AWG, .75-2.5mm² Terminal Capacity
 Maximum 500 Volts @ 2 Amps. Ambient Temperature -25° to 70°C.
 Material: plastic body, plastic ring, plated copper contacts.
 IEC/EN 60947 conformed, VDE 0660 conformed, CSA certified, UL listed
 Ingress of protection: IP 67, 69K (IEC 60 529), NEMA/UL/CSA: 12, 13, 3R, 4X
 WEIGHT: 0.4 Lbs. (0.18Kg)



CAGE: 75214
 PARTS LIST DRAWING 3-6758

© Copy/Right Kahlenberg Ind. Inc. 2010

Kahlenberg
 KAHLBERG INDUSTRIES INC. TWO RIVERS, WISCONSIN 54241

OUTLINE DIMENSIONS
M-314 PUSH BUTTON

DR.	DATE	CKD.	SCALE	DRWG. NO.	REV.
ZJN	03/01/13	EMK	N.T.S.	3-6757	A