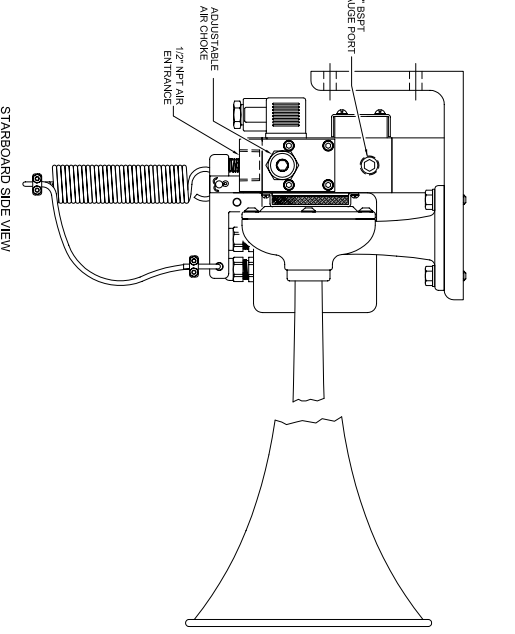
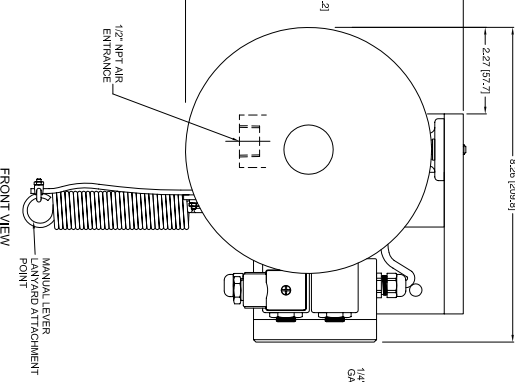
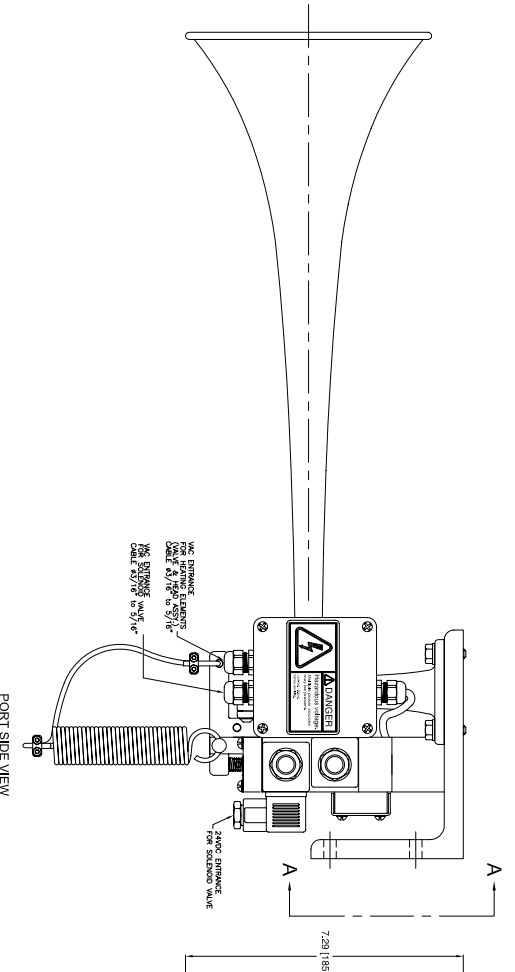
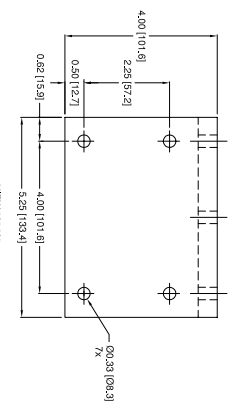
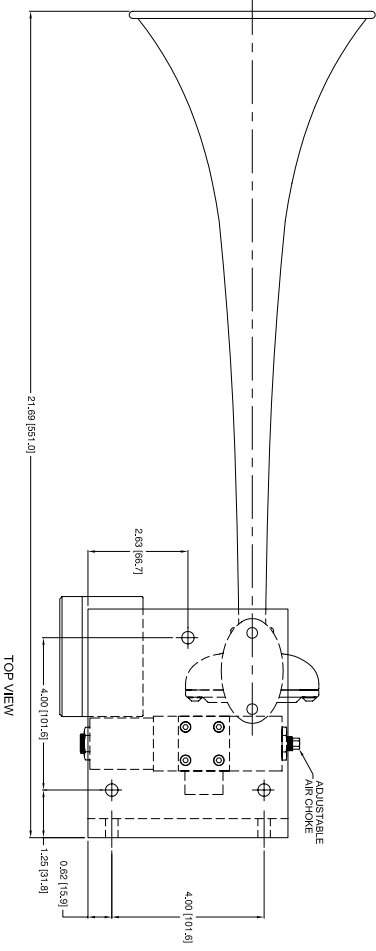
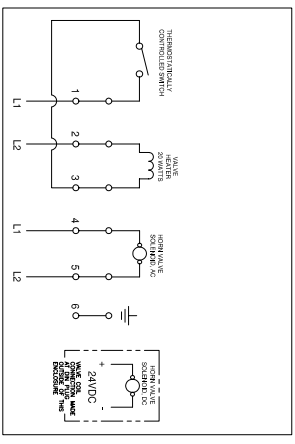


# Conforming to International Maritime Regulations For Vessels 20 - 75 Meters in Length

REV.	BY	DATE	DESCRIPTION	APP'D.
A	ZJN	04/20/12	BRASS MATERIAL WAS CHGd NAVAL BRASS	EMK



### WIRING DIAGRAM



### GENERAL NOTES

- THE ORIFICE INTO THE HORN CAN BE INCREASED FOR THE LOWER PRESSURES AND DECREASED FOR HIGHER PRESSURES. CONSULT FACTORY WHEN OPENINGS SO AIR CHOKE CAN BE PRESET ACCORDINGLY.
1. START WITH ONE PIPE SIZE LARGER THAN INLET INTO HORN AND INCREASE BY ONE PIPE SIZE FOR EVERY 100 FT OF RUN
  2. PRESSURE DROP AT HORN SHOULD NOT EXCEED 15 P.S.I. AT THE WHISTLE BASE WHILE HORN IS BLOWING.
  3. PIPE SHOULD BE INSTALLED WITH A CONTINUAL RISE TO THE LAYOUT WITH AS FEW ELBOWS AS POSSIBLE.
  4. COPPER TUBING AND FITTINGS ARE LESS RESTRICTIVE THAN IRON PIPE AND CAST FITTINGS. IF USING IRON PIPE USE TEFLON TAPE ON MALE THREADS.
  5. AIR SUPPLY SHOULD BE TAKEN FROM THE TOP OF TANK OR MAIN SUPPLY LINE
  6. ON LONG UNMOUNTABLE RUNS, AN AIR RECEIVER COATED CLOSE TO HORN WILL AVOID EXCESSIVE PRESSURE WHEN HORN IS SOUNDING.
  7. INSTALL SHUT-OFF VALVE WHERE NECESSARY TO FACILITATE SERVICES
  8. OUTSIDE RUNS EXPOSED TO COLD WEATHER SHOULD BE INSULATED OR PROTECTED WITH HEATING CABLE.
  9. BEFORE CONNECTING HORN, BLOW OUT LINES THOROUGHLY TO REMOVE PIPE CHIPS OR OTHER ACCUMULATED DEBRIS.
  10. HORN PRODUCES EXTREME SOUND OUTPUT. USE EAR PROTECTORS AT ALL TIMES WHEN CHECKING OR TESTING WHISTLES.

### CONVERSION

- 1 PSI = 0.0689 BAR
- 1 CFM = 0.4719 L/SEC
- 1" (inch) = 25.4 MM
- 1 FT = 0.3048 METTER
- 1 LB = 0.4535 KG

- NET WEIGHT: 12 LBS / 5.44 KG.
- MATERIALS: 6061 ALUMINUM ALLOY, C36000 BRASS, 316 STAINLESS STEEL FASTENERS.
- FINISH: TOIC WHITE POWDERCOAT.
- INGRESS RATING: IP66
- OPERATING TEMPERATURE RANGE: -40°C - 21°F
- ☺ = CENTER OF GRAVITY

### TECHNICAL DATA

- Frequency: 330 Hz
- Sound Pressure Level (dB(A) @ 1 meter): 136.0 dB
- Sound Pressure Level (1/3 octave at 1 meter): 131.9 dB
- Air Consumption: 9 C.F.M. @ 100 P.S.I.
- Air Pressure Req: 75 to 580 P.S.I. (5.2 to 40 bar)
- Electric Power: 120 OR 230 VAC, & 24 VDC
- Material: Spun Brass and Cast Bronze
- Net Weight: 12 Lbs. (5.44 Kg)
- Shipping Weight: 16 Lbs. (7.3 Kg)

### CONFIDENTIAL

PROPRIETARY INFORMATION  
PROPERTY OF HALLBROOK INDUSTRIES  
INC. IT IS TO BE USED EXCLUSIVELY  
FOR THE PURPOSES SPECIFIED IN THE  
ORDER. WITHOUT THE PRIOR  
WRITTEN CONSENT OF HALLBROOK  
INDUSTRIES INCORPORATED.



### OUTLINE DIMENSIONS S-330-DVM AIRHORN

DR.	DATE	CHKD.	SCALE	DRWG. NO.	REV.
ZJN	01/18/12	EMK	N.T.S.	3-6647	A

CAGE: 75214  
PARTS LIST: 3-6648