

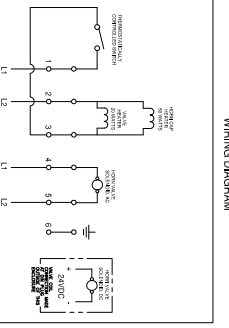
| SPECIFICATIONS FOR VESSEL OVER 200 METERS IN LENGTH | | | |
|---|----------------|------|-------|
| ITEM NO. | DESCRIPTION | UNIT | VALUE |
| 1 | VALVE PRESSURE | PSI | 150 |
| 2 | VALVE WEIGHT | LB | 12 |
| 3 | VALVE LENGTH | IN | 12 |
| 4 | VALVE DIAMETER | IN | 1.5 |
| 5 | VALVE WEIGHT | KG | 5.4 |
| 6 | VALVE LENGTH | CM | 30.5 |
| 7 | VALVE DIAMETER | CM | 3.8 |

- ① SOLE PRESSURE LEVEL WITH 150 PSIA PRESSURE AT VALVE IN THE BULK HEAD BOWMAN.
- ② WEIGHT INFORMATION, VARIATION OBSERVATION (IF CORRECT).
- ③ WEIGHT INFORMATION BASED ON 150 PSIA PRESSURE WITH MAXIMUM PRESSURE DROP OF 10 PSI.
- ④ WEIGHT INFORMATION BASED ON 150 PSIA PRESSURE WITH MAXIMUM PRESSURE DROP OF 10 PSI.
- ⑤ WEIGHT INFORMATION BASED ON 150 PSIA PRESSURE WITH MAXIMUM PRESSURE DROP OF 10 PSI.

GENERAL NOTES

- THE HANDLE AND THE BODY CAN BE MODIFIED FOR THE COMPLETE FACTORY WHEN ORDERING SO WE CAN BE PREPARED ACCORDING TO YOUR REQUIREMENTS.
- THE HANDLE AND THE BODY CAN BE MODIFIED FOR THE COMPLETE FACTORY WHEN ORDERING SO WE CAN BE PREPARED ACCORDING TO YOUR REQUIREMENTS.
- THE HANDLE AND THE BODY CAN BE MODIFIED FOR THE COMPLETE FACTORY WHEN ORDERING SO WE CAN BE PREPARED ACCORDING TO YOUR REQUIREMENTS.
- THE HANDLE AND THE BODY CAN BE MODIFIED FOR THE COMPLETE FACTORY WHEN ORDERING SO WE CAN BE PREPARED ACCORDING TO YOUR REQUIREMENTS.
- THE HANDLE AND THE BODY CAN BE MODIFIED FOR THE COMPLETE FACTORY WHEN ORDERING SO WE CAN BE PREPARED ACCORDING TO YOUR REQUIREMENTS.
- THE HANDLE AND THE BODY CAN BE MODIFIED FOR THE COMPLETE FACTORY WHEN ORDERING SO WE CAN BE PREPARED ACCORDING TO YOUR REQUIREMENTS.
- THE HANDLE AND THE BODY CAN BE MODIFIED FOR THE COMPLETE FACTORY WHEN ORDERING SO WE CAN BE PREPARED ACCORDING TO YOUR REQUIREMENTS.
- THE HANDLE AND THE BODY CAN BE MODIFIED FOR THE COMPLETE FACTORY WHEN ORDERING SO WE CAN BE PREPARED ACCORDING TO YOUR REQUIREMENTS.
- THE HANDLE AND THE BODY CAN BE MODIFIED FOR THE COMPLETE FACTORY WHEN ORDERING SO WE CAN BE PREPARED ACCORDING TO YOUR REQUIREMENTS.
- THE HANDLE AND THE BODY CAN BE MODIFIED FOR THE COMPLETE FACTORY WHEN ORDERING SO WE CAN BE PREPARED ACCORDING TO YOUR REQUIREMENTS.

NET WEIGHT: 32 LBS (23,50 KG)
 MATERIALS: 7059 ALUMINUM ALLOY
 316 STAINLESS STEEL FASTENERS
 FINISH: ALUMINUM COMPONENTS ARE ANODIZED TREATED
 AND COATED WITH GREY POLYURETHANE PAINT
 OPERATING TEMPERATURE RANGE: -40°F/C
 ± 0.001 IN. - GRAVITY



CONVERSION

- 1 PSI = 0.0689 BAR
- 1 CM = 0.4719 IN
- 1 FT (inch) = 25.4 MM
- 1 FT = 0.3048 METER
- 1 LB = 0.4535 KG

CONFIDENTIAL

INFORMATION CONTAINED HEREIN IS CONFIDENTIAL, IT IS THE PROPERTY OF KAHLENBERG INDUSTRIES INC. IT IS NOT TO BE USED SOLELY FOR THE PURPOSE PROVIDED AND IT IS NOT TO BE DISCLOSED TO OTHERS WITHOUT THE PRIOR WRITTEN CONSENT OF KAHLENBERG INDUSTRIES INCORPORATED.



KAHLENBERG INDUSTRIES INC. TWO RIVERS, WISCONSIN 54241

OUTLINE DIMENSIONS
 MODEL KM-110-DV-MH-120-24 AIRHORN
 WITH DUAL VOLTAGE SOLENOID/MANUAL VALVE

| DR. | DATE | CKD. | SCALE | DRWG. NO. | REV. |
|-----|----------|------|--------|-----------|------|
| ZIN | 11/07/10 | EMK | N.T.S. | 3-6604 | |

CAGE: 75214
 PARTS LIST: 3-6605