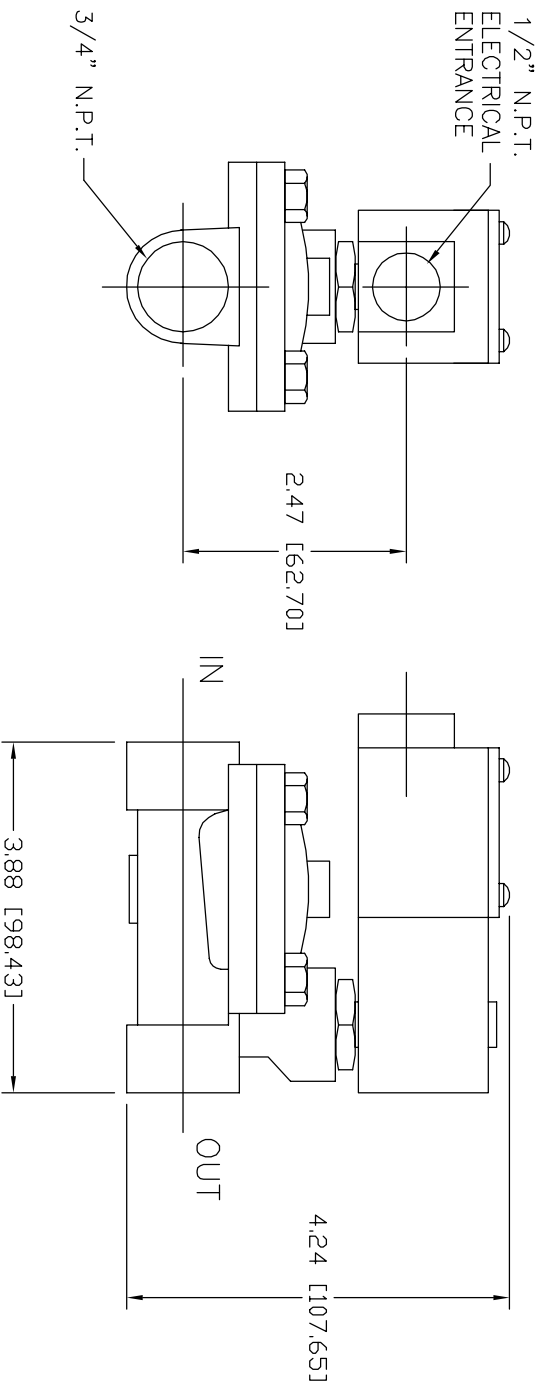
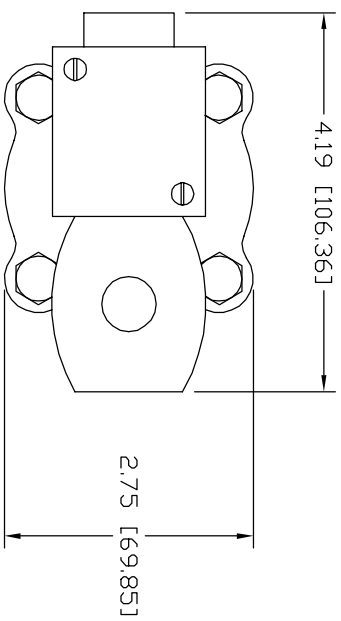


CURRENT REQUIREMENTS
FOR SOLENOID VALVE

VOLTAGE	AMPS
220 V.A.C.	0.03
24 V.D.C.	0.50



BODY MATERIAL: BRASS
NOTE: 250 P.S.I. MAX. OPERATING PRESSURE (A.C. VOLTAGE)
NOTE: 125 P.S.I. MAX. OPERATING PRESSURE (D.C. VOLTAGE)

Kahlenberg's
KAHLENBERG BROS. CO. TWO RIVERS, WI. U.S.A.

OUTLINE DIMENSIONS
FIG. V-152, 3/4" N.P.T. SOLENOID
VALVE, VA/25102/00000/NF

DR.	DATE	CKD.	SCALE	DRWG. NO.	REV.
ZJN	05/17/01	EMK	N.T.S.	2-5102	B