

Omni-Directional, Single Tone Industrial Air Alarm

*EFFECTIVE OUTDOOR COVERAGE RADIUS OF UP TO 3 KILOMETERS



Omni-directional design provides for even coverage over a 2 mile radius in all directions.

Ideal for use outdoors with built in direct driven air compressor

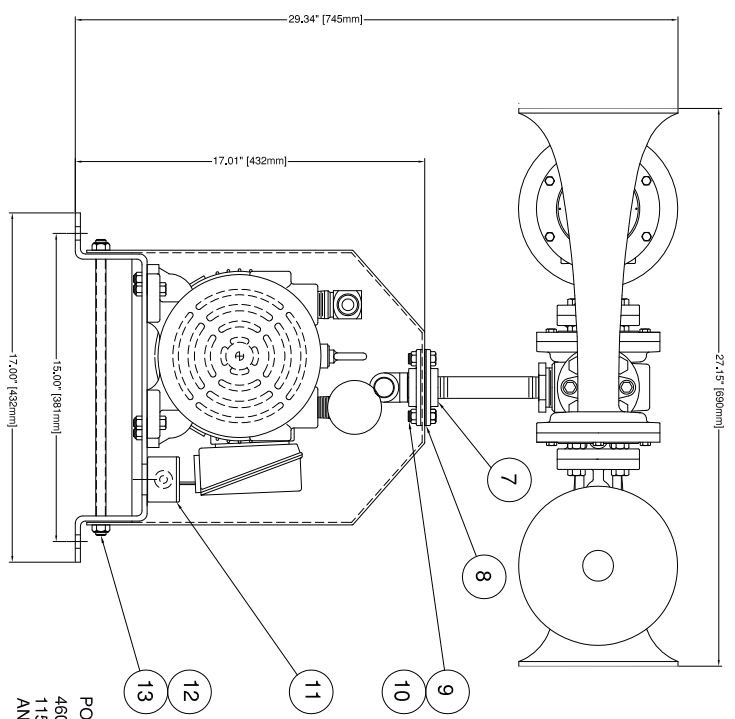
Thermostatically controlled, heated and weatherproof

Horn construction: Solid cast aluminum horns with stainless steel diaphragm disc

Signal will produce a sound pressure level of approximately 70 dB @ 4 km in calm, cool conditions without topographical interference. Signal strength at distance can vary dramatically depending on environmental and geographical conditions. Please consult factory for more detailed information.

Control:	Manual, solenoid or combination valve
SPL (Loudness) on Total:	140 ± 1 dBA @ 1 meter
Operating Medium:	Air, nitrogen, CO ₂ , 3/4" NPT inlet
Air Consumption:	44 L/Sec [96 SCFM] @ 7 bar [100 PSIG]
Audibility:	3.5 km on still air
Fundamental Frequency:	311 Hz ± 10 Hz
Tone (Musical Note):	D ₄ sharp
Operating Pressure:	3 – 10 bar [50 – 150 PSI]
Operating Temperature:	-4°C to +85°C [25°F to +185°F]
Finish:	Painted red (alkyd enamel)
Degree of Protection:	IP 54
Basic Dimension:	JFI xĪ J€xĪ l í mm [HĪ xGĪ xGĪĪ "]
Net Weight:	113 kg [250 lbs]

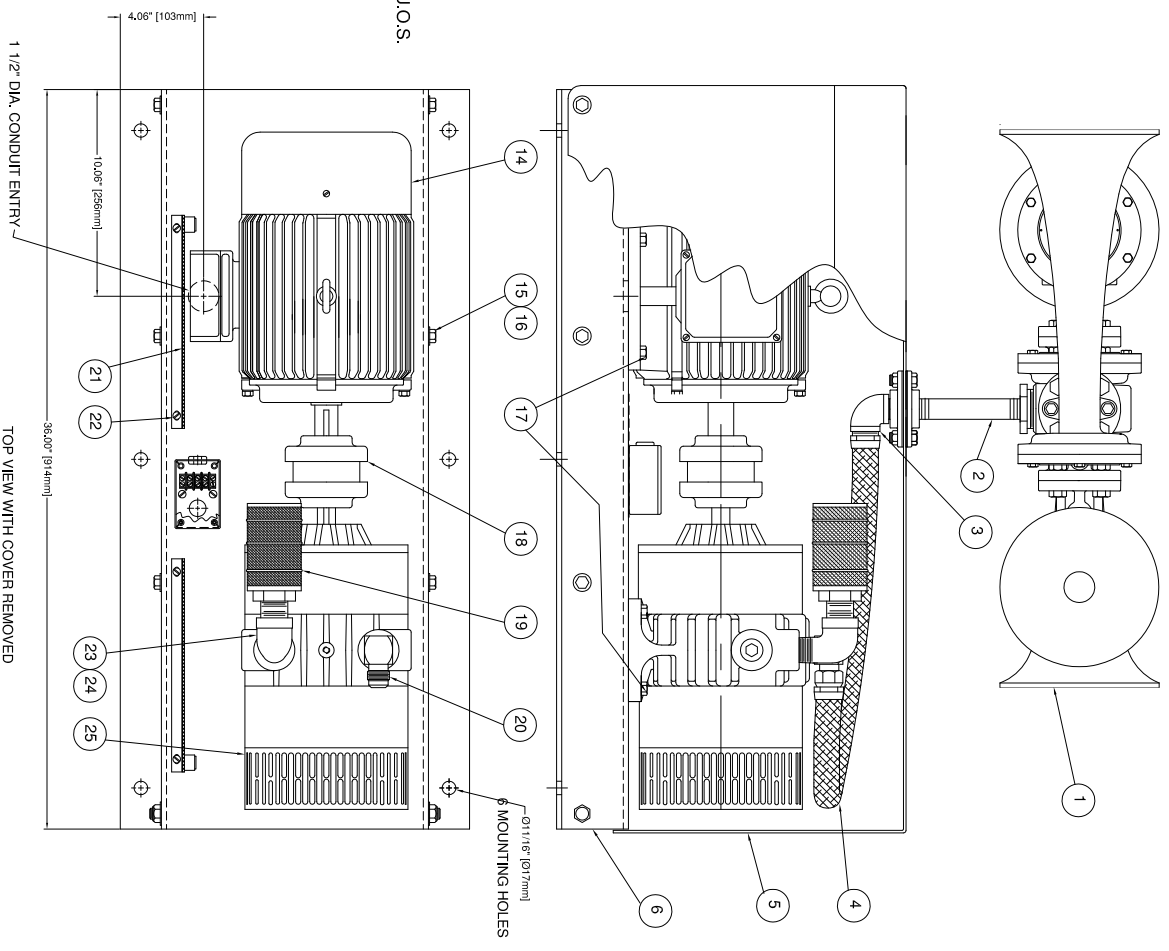
REV.	BY	DATE	DESCRIPTION	APP'D.



POWER SUPPLY:
460VAC/3PH/60HZ TO MOTOR
115VAC/1PH/60HZ TO HEATER
AND WHISTLE CONTROL

ALL DIMENSIONS FOR REFERENCE ONLY, U.O.S.

REF	PART	DESCRIPTION	MATERIAL	SPECIFICATION	QTY
1	30265	K4-1 AIR HORN	DRAWING No. 30265	ASSEMBLY	1
2	13618	PIPE NIPPLE, 1 1/2" NPT x 4"	BLACK IRON	ANSI B21	1
3	14155	90 DEGREE ELBOW	STAINLESS STEEL	UNS S31600	1
4	14011	HOSE ASSEMBLY	ASSEMBLY	CSA CERTIFIED	1
5	14095	COVER	ALUMINUM	CSA HA.4 GR20	1
6	14090	BASE	ALUMINUM	CSA CERTIFIED	1
7	32425	PIPE FLANGE, 1 1/2" NPT	NUDULAR IRON	COMMERCIAL	2
8	32427	PIPE FLANGE GASKET	CORK NEOPRENE	COMMERCIAL	2
9	32114	SOCKET HEAD CAP SCREW	STAINLESS STEEL	ASTM F593C	4
10	88223	HEX LOCKNUT 3/8-16	STAINLESS STEEL	ASTM F594	12
11	18124	JUNCTION BOX	DRAWING No. 18124	ASSEMBLY	1
12	14013	HINGE ROD	STAINLESS STEEL	UNS S30400	1
13	10548	HEX LOCKNUT 1/2-13	STAINLESS STEEL	ASTM F594	4
14	14023	MOTOR 5HP, TEFC	DRAWING No. 14023	CSA LR93145	1
15	88223	HEX HEAD CAP SCREW 3/8	STAINLESS STEEL	ASTM F593C	6
16	88225	3/8" FLAT WASHER	STAINLESS STEEL	ANSI B18.2	14
17	88224	HEX HEAD CAP SCREW 3/8	STAINLESS STEEL	ASTM F593C	8
18	14097	COUPLING	DRAWING No. 14097	ASSEMBLY	1
19	61034	FELT FILTER	ASSEMBLY	COMMERCIAL	1
20	14180	90° ELBOW, 1" x 3/4"	STEEL CAP PLATED	SAE J514	1
21	18121	FLEXIBLE HEATER 115V/150W	DRAWING No. 18122	ASSEMBLY	2
22	65098	MACHINE SCREW 10-24x3/8	STAINLESS STEEL	ASA B27	4
23	14155	STREET ELBOW, 1" NPT	STAINLESS STEEL	UNS S31600	1
24	14160	PIPE NIPPLE 1" X CLOSE	STAINLESS STEEL	UNS S31600	1
25	60000	ROTARY AIR COMPRESSOR	DRAWING No. 60000	ASSEMBLY	1



TOP VIEW WITH COVER REMOVED

CONFIDENTIAL

INFORMATION CONTAINED HEREIN IS CONFIDENTIAL. IT IS THE PROPERTY OF KAHLBERG INDUSTRIES INC. IT IS TO BE USED SOLELY FOR THE PURPOSE PROVIDED AND IT IS NOT TO BE DISCLOSED TO OTHERS WITHOUT THE PRIOR WRITTEN CONSENT OF KAHLBERG INDUSTRIES INCORPORATED.

Kahlberg
TWO RIVERS, WISCONSIN 54241

OUTLINE DIMENSIONS / PARTS LIST
MODEL K4-1-SC-460-230
SELF CONTAINED AIR HORN

CAGE: 75214

Copyright Kahlberg Ind. Inc. 2010

DR.	DATE	CKD.	SCALE	DRWG. NO.	REV.
ZJN	03/19/13	EMK	N.T.S.	30650	