

SPECIFICATIONS FOR VESSEL OVER 200 METERS IN LENGTH

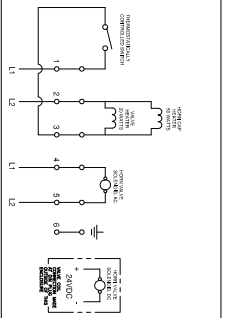
ITEM NO.	DESCRIPTION	UNIT	VALUE
1	VALVE WEIGHT	KG	17.28
2	TOTAL VALVE WEIGHT	KG	124.98
3	VALVE WEIGHT PER METRE	KG/M	1.13
4	VALVE WEIGHT PER METRE	KG/M	38.02
5	VALVE WEIGHT PER METRE	KG/M	2500.93

- ① SOLE PRESSURE LEVEL WITH 10 BAR PRESSURE AT VALVE IN THE BOTTOM.
- ② MAXIMUM ALLOWABLE WORKING PRESSURE (M.A.W.P.)
- ③ MAXIMUM ALLOWABLE WORKING PRESSURE (M.A.W.P.)
- ④ CONSULTATION BASED ON 10 BAR PRESSURE WITH MAXIMUM PRESSURE RATIO OF 1:1.5
- ⑤ THE COMPRESSION RATIO WITH MAXIMUM PRESSURE RATIO OF 1:1.5 OF THE VALVE CONSUMPTION SHOWS PROXIMAL INTERMITTENT SERVICE.

GENERAL NOTES

- THE HANDLE AND THE BODY CAN BE MODIFIED FOR THE COMPLETE FACTORY WHEN ORDERING SO WE CAN BE PREPARED ACCORDING TO YOUR REQUIREMENTS.
- THE HANDLE SHOULD NOT EXCEED 18.54 AT THE POINT OF THE VALVE.
- THE HANDLE SHOULD NOT EXCEED 18.54 AT THE POINT OF THE VALVE.
- THE HANDLE SHOULD NOT EXCEED 18.54 AT THE POINT OF THE VALVE.
- THE HANDLE SHOULD NOT EXCEED 18.54 AT THE POINT OF THE VALVE.
- THE HANDLE SHOULD NOT EXCEED 18.54 AT THE POINT OF THE VALVE.
- THE HANDLE SHOULD NOT EXCEED 18.54 AT THE POINT OF THE VALVE.
- THE HANDLE SHOULD NOT EXCEED 18.54 AT THE POINT OF THE VALVE.
- THE HANDLE SHOULD NOT EXCEED 18.54 AT THE POINT OF THE VALVE.
- THE HANDLE SHOULD NOT EXCEED 18.54 AT THE POINT OF THE VALVE.
- THE HANDLE SHOULD NOT EXCEED 18.54 AT THE POINT OF THE VALVE.
- THE HANDLE SHOULD NOT EXCEED 18.54 AT THE POINT OF THE VALVE.
- THE HANDLE SHOULD NOT EXCEED 18.54 AT THE POINT OF THE VALVE.
- THE HANDLE SHOULD NOT EXCEED 18.54 AT THE POINT OF THE VALVE.
- THE HANDLE SHOULD NOT EXCEED 18.54 AT THE POINT OF THE VALVE.

NET WEIGHT: 22.18 KG
 MATERIALS: 7059 ALUMINUM ALLOY,
 316 STAINLESS STEEL FASTENERS,
 FINISH: ALUMINUM COMPONENTS ARE ANODIZED TREATED
 AND COATED WITH GREY POLYURETHANE PAINT.
 OPERATING TEMPERATURE RANGE: -40°F/C
 ⚠️ - CENTER OF GRAVITY



CONVERSION

1 PSI = 0.0689 BAR
 1 CM = 0.4719 INCH
 1 FT = 0.3048 METER
 1 LB = 0.4535 KG

CONFIDENTIAL

INFORMATION CONTAINED HEREIN IS CONFIDENTIAL, IT IS THE PROPERTY OF KAHLENBERG INDUSTRIES INC. IT IS NOT TO BE USED SOLELY FOR THE PURPOSE PROVIDED AND IT IS NOT TO BE DISCLOSED TO OTHERS WITHOUT THE PRIOR WRITTEN CONSENT OF KAHLENBERG INDUSTRIES INCORPORATED.



KAHLENBERG INDUSTRIES INC.
 TWO RIVERS, WISCONSIN 54241

OUTLINE DIMENSIONS
 MODEL KM-110-DV-MH-230-24 AIRHORN
 WITH DUAL VOLTAGE SOLENOID/MANUAL VALVE

DR.	DATE	CKD.	SCALE	DRWG. NO.	REV.
ZJN	12/02/10	ENK	N.T.S.	3-6633	

CAGE: 75214
 PARTS LIST: 3-6634