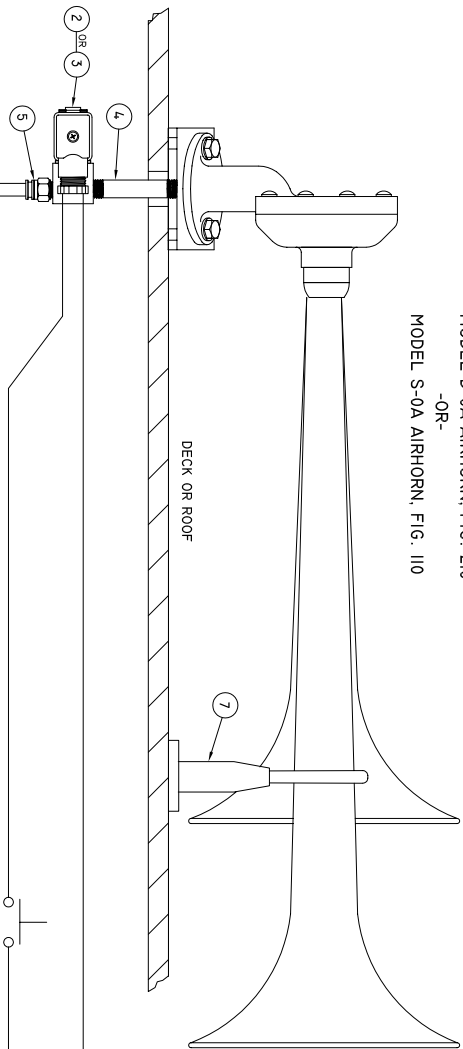
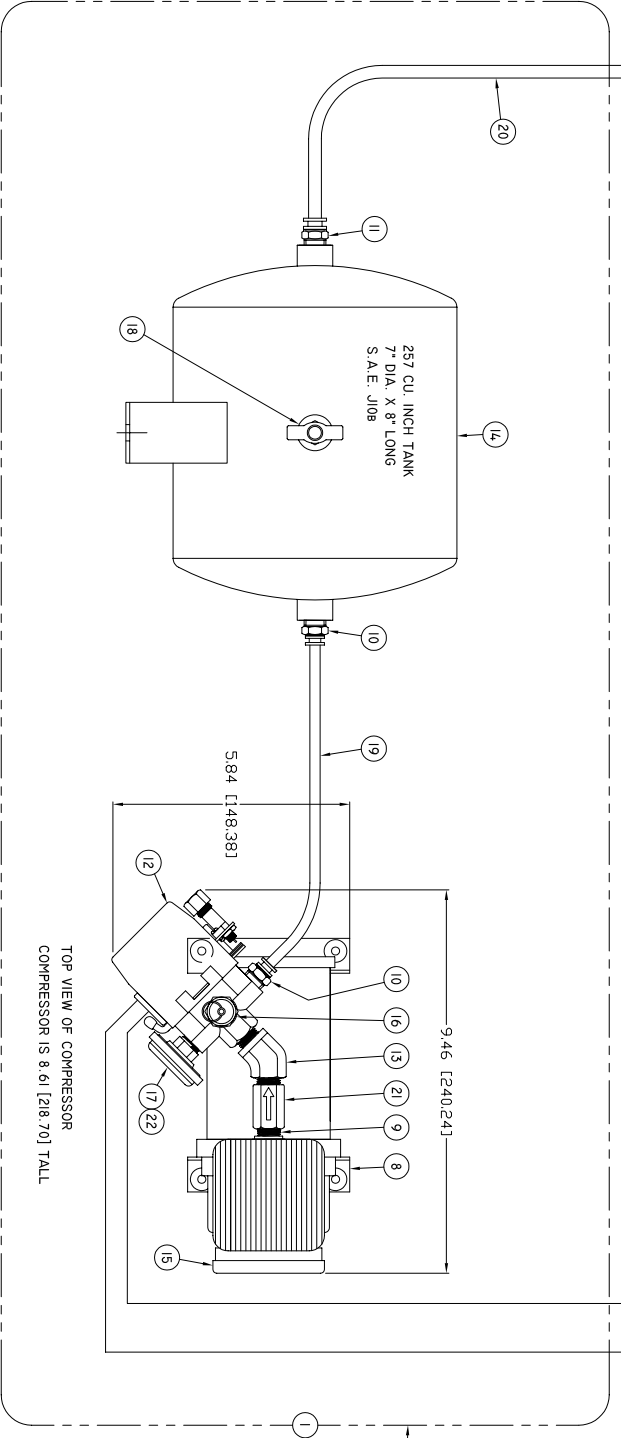


KAHLENBERG
 MODEL D-0A AIRHORN, FIG. 210
 -OR-
 MODEL S-0A AIRHORN, FIG. 110



FUSE REQUIREMENTS:
 FUSE & FUSE HOLDERS
 ARE CUSTOMER SUPPLIED
 12 VOLT: 25 AMP SLOW BURN
 24 VOLT: 16 AMP SLOW BURN



TOP VIEW OF COMPRESSOR
 COMPRESSOR IS 8.61 [28.70] TALL

REV.	BY	DATE	DESCRIPTION	APP'D.
A	ZN	04/20/05	CHANGED CFM @ 0 TO 100 PSI	EKM
B	ZN	03/19/10	PRESSURE SWITCH WAS PT148-002	EKM
C	ZN	04/07/10	ADDED V-63 CHECK VALVE	EKM
D	ZN	06/09/10	LABELD ITEM 12 ON DRAWING	EKM
E	ZN	01/17/11	ITEM 17 WAS M-143, ADDED ITEM 22 EKM	EKM

NO.	PART NO.	DESCRIPTION	DRWG.
1	P44-9-17	COMPRESSOR KIT 12V DC	
2	P44-9-18	COMPRESSOR KIT, 24V DC	2-5045
3	V-69K	SOLENOID VALVE, 1/2 OR 24V DC, 1/8" NPT	2-1456
4	P129-08	MANUAL VALVE, 1/8" NPT	
5	P516-03	PIPE NIPPLE, 1/8" NPT	
6	M-126	CONNECTOR, MALE 1/8" NPT X 5/16" TB	
7	P519-01	PUSH BUTTON SW. MOMENTARY, S.P.S.T.	2-5047
8	P44-9-15/16	PROJECTOR SUPPORT ASSEMBLY	2-5046
9	P129-19	COMPRESSOR UNIT ONLY, 15412VDC, 16-24V	
10	P516-04	NIPPLE, CLOSE, 1/4" NPT	
11	P516-05	CONNECTOR, MALE 1/4" NPT X 1/4" TUBE	
12	PT148-005	PROJECTOR SUPPORT ONLY, 120V/50 P.S.I.	3-6554
13	P512-06	ELBOW, 45 DEGREE, 1/4" NPT	
14	P521-01A	PRESSURE SWITCH, 120V/50 P.S.I.	
15	92623	AIR RECEIVER	
16	V-80B	FILTER	
17	M-44S	VALVE, SAFETY, 175 PSI	
18	D17-6-02	GAUGE, PRESSURE	
19	PT130-005	TUBE, 1/4" O.D. X 8", S.A.E. J844	
20	PT130-004	TUBE, 3/16" O.D. X 15" LONGER LENGTHS AVAILABLE, S.A.E. J844	
21	V-63	CHECK VALVE	
22	PT134-004	BISSING, FACE, 1/8-1/4" NPT	

*** SUGGESTED ONLY FOR HIGH SHOCK CONDITIONS

D.C. POWER SOURCE	CURRENT REQUIREMENTS
12 VOLT	21 AMP
24 VOLT	12 AMP
C.F.M. OUTPUT @ 100 P.S.I.	
12 VOLT	0.85 C.F.M.
24 VOLT	0.99 C.F.M.

ALL ITEMS WITHIN DASHED LINE ARE INCLUDED IN COMPRESSOR KIT. KIT ALSO INCLUDES ITEMS #4 & #5.

MOUNT COMPRESSOR ON RIGID SUPPORT IN PROTECTED AREA WITH AIR FLOW AROUND THE COMPRESSOR.

USE PIPE SEALANT ON ALL THREADED PIPE JOINTS.

PRESSURE SWITCH MAINTAINS PRESSURE BETWEEN 120 & 150 P.S.I.

REFER TO INSTRUCTION SHEETS FOR ALL INSTALLATION REQUIREMENTS.

KAHLENBERG INDUSTRIES
 TWO RIVERS, WI, U.S.A.

INSTALLATION (SUGGESTED) & PARTS LIST FOR "D-0A" & "S-0A" AIRHORN SYSTEM

DR.	DATE	CND.	SCALE	DRWG. NO.	REV.
ZJN	12/06/04	EKM	N.T.S.	3-6331	E