



SOUND SIGNALING EQUIPMENT

Accessories - Air Compressors

Model P449-25 Air Compressor System

The Kahlenberg P449-25 Compressed Air System is a quiet, oil-less compressor solution incorporating a compact, continuous duty compressor pump, pressure switch and regulator assembly specifically arranged for marine use.



Technical Details

Voltage: 24 V.D.C.

Max Current: 14A @24 Volts

FAD @ 8 bar: .94 CFM, 26.6 l/min

Max Pressure: 150 p.s.i., 10.31 bar

Weight: 23 lbs., 10.4 kg, Compressor and Tank

Noise Level: 69 dB(A)@ 1 meter

Thermal Protection: Yes

Duty Cycle: 100% Continuous

Vibration Isolated: Yes

Wire Size: 12 AWG min.

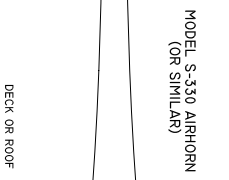
Features and benefits of the P449-25 include:

- ✦ **Quiet Operation:** 69dB(A) @ 1 meter
- ✦ **Oil-less, Continuous Duty Operation:**
(minimizes maintenance by eliminating oil in air lines)
- ✦ **Regulated Output:** Included air regulator allows for controlled air consumption without reducing volume of air available in the system.
- ✦ **Easy Installation:** Fittings, air tank, and tubing are supplied, as are safety valve and air gauge. All fittings are instant connect. The only wiring required is connection of the compressor assembly to line voltage.

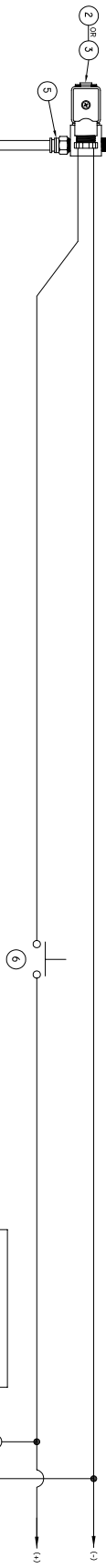
The P449-25 Compressor System provides output sufficient for Kahlenberg Air Horn Models S-0A, D-0A, T-0A, and S-330

Kahlenberg Industries, Inc.
1700 12th Street, P.O. Box 358
Two Rivers, WI 54241 U.S.A.
www.kahlenberg.com

3-6619



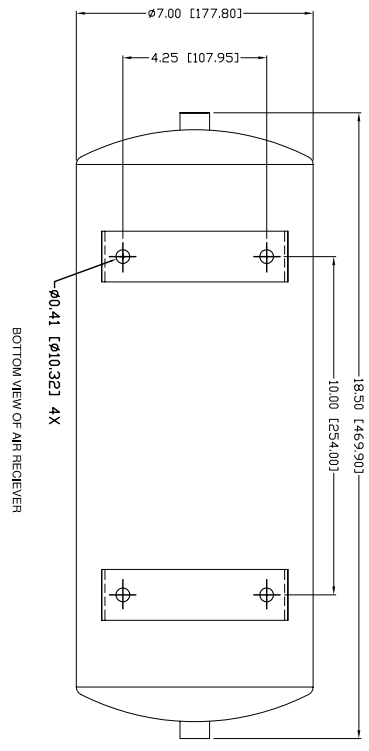
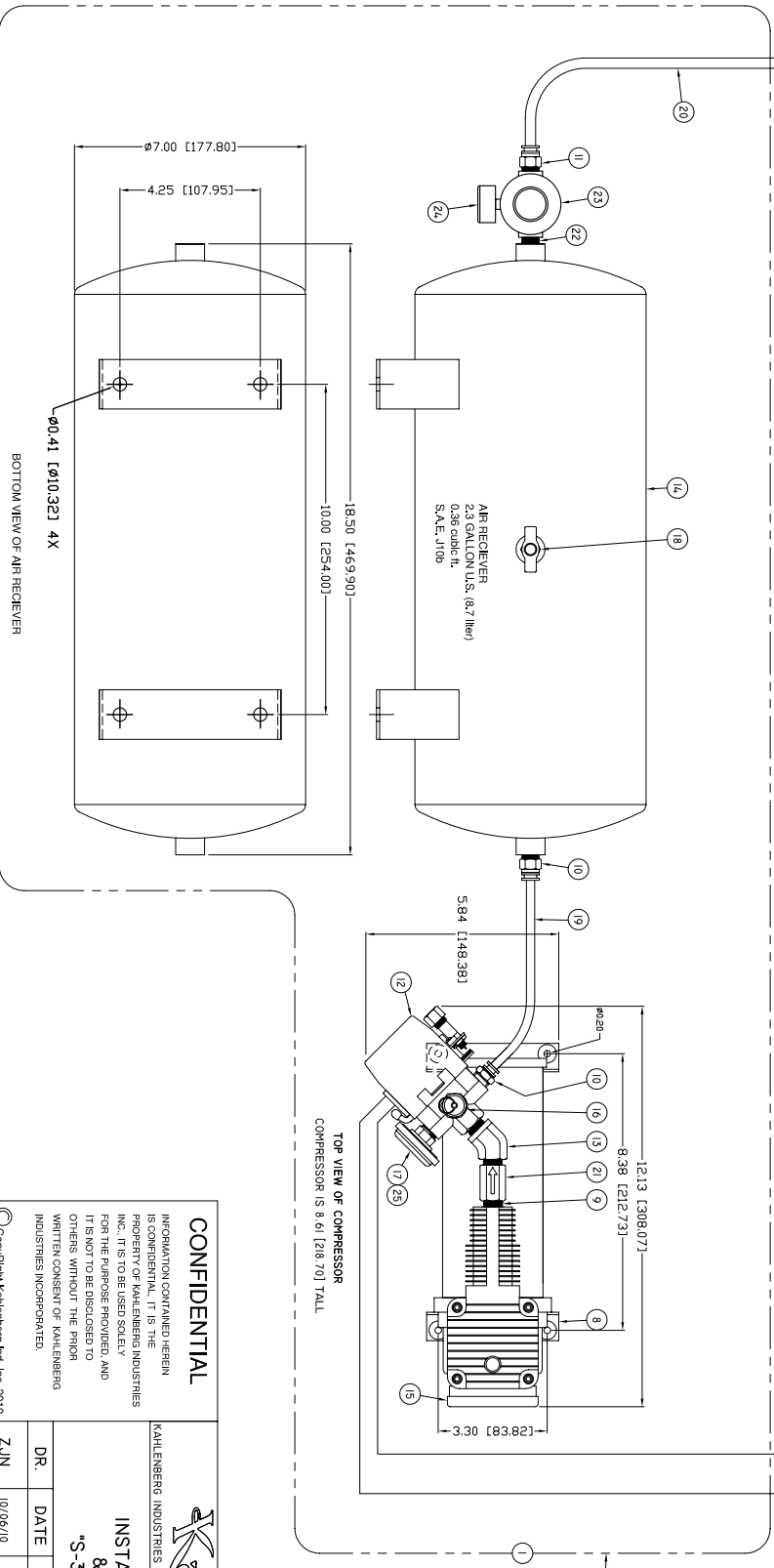
NO.	PART NO.	DESCRIPTION	DRWG.
1	P449-26	COMPRESSOR KIT, 12V DC	
2	P449-25	COMPRESSOR KIT, 24V DC	
3	V-69K	SOLENOID VALVE, 12 OR 24V DC, 1/8" NPT	2-5045
4	V-10B	MANUAL VALVE, 1/8" NPT	2-1456
5	P129-08	PIPE NIPPLE, 1/8" NPT	
6	P916-03	CONNECTOR, MALE 1/8" NPT X 5/16" TB	
7	M-126	PUSH BUTTON SW. MOMENTARY, S.P.S.T.	2-5047
8	PT134-004	COMPRESSOR UNIT ONLY, -142PDC, -12-24V	
9	P129-19	NIPPLE, GLOBE, 1/4" NPT	
10	P916-04	CONNECTOR, MALE 1/4" NPT X 1/4" TUBE	
11	P916-05	CONNECTOR, MALE 1/4" NPT X 5/16" TUBE	
12	PT148-005	PRESSURE SWITCH, 120/150 P.S.I.	3-6554
13	P512-06	ELBOW, 45 DEGREE, 1/4" NPT	
14	P521-04	AIR RECEIVER	
15	92623	FILTER	
16	V-808	VALVE, SAFETY, 175 PSI	
17	M-145	GAUGE, PRESSURE	
18	D176-02	DRAINCOCK	
19	PT130-005	TUBE, 1/4" O.D. X 3" S.A.E. J844	
20	PT130-004	TUBE, 5/8" O.D. X 5" (LENGTHS AVAILABLE), S.A.E. J844	
21	V-653	CHECK VALVE	
22	P129-03	NIPPLE, 1/4" N.P.T.	
23	P553-01	REGULATOR	
24	M-140	PRESSURE GAUGE	
25	PT134-004	BUSHING, FACE, 1/8-1/4" NPT	



CURRENT REQUIREMENTS	
12 VOLT	19 AMP
24 VOLT	14 AMP
C.F.M. OUTPUT @ 100 P.S.I.	
12 VOLT	0.94 C.F.M.
24 VOLT	0.97 C.F.M.

FUSE REQUIREMENTS
FUSE & FUSE HOLDERS
ARE CUSTOMER SUPPLIED
12 VOLT, 25 AMP SLOW BURN
24 VOLT, 20 AMP SLOW BURN

ALL ITEMS WITHIN DASHED LINE ARE INCLUDED IN COMPRESSOR KIT. KIT ALSO INCLUDES ITEMS #4, & #5.
MOUNT COMPRESSOR ON RIGID SUPPORT IN PROTECTED AREA WITH AIR FLOW AROUND THE COMPRESSOR.
USE PIPE SEALANT ON ALL THREADED PIPE JOINTS.
PRESSURE SWITCH MAINTAINS PRESSURE BETWEEN 20 & 150 P.S.I.
REFER TO INSTRUCTION SHEETS FOR ALL INSTALLATION REQUIREMENTS.



TOP VIEW OF COMPRESSOR
COMPRESSOR IS 5.61 [218.70] TALL

BOTTOM VIEW OF AIR RECEIVER

CONFIDENTIAL

INFORMATION CONTAINED HEREIN IS CONFIDENTIAL. IT IS THE PROPERTY OF KAHLBERG INDUSTRIES INC. IT IS TO BE USED SOLELY FOR THE PURPOSE PROVIDED AND IT IS NOT TO BE DISCLOSED TO OTHERS WITHOUT THE PRIOR WRITTEN CONSENT OF KAHLBERG INDUSTRIES INCORPORATED.

KAHLBERG

KAHLBERG INDUSTRIES INC. TWO RIVERS, WI, U.S.A.

INSTALLATION (SUGGESTED) & PARTS LIST FOR "S-330" AIRHORN SYSTEM

DR.	DATE	CND.	SCALE	DRWG. NO.	REV.
ZJN	10/06/10	EJK	N.T.S.	3-6619	

REV.	BY	DATE	DESCRIPTION	APP'D.
A	ZN	10/18/10	ADDED ITEMS 22-24	EMK
B	ZN	01/18/11	ITEM 17 WAS M-143, ADDED ITEM 25	EMK
C	ZN	06/24/11	HORN SHOWN WAS MODEL S-1	EMK