

## Omni-Directional, Single Tone Industrial Air Horn

\*EFFECTIVE OUTDOOR COVERAGE RADIUS OF UP TO 3 KILOMETERS



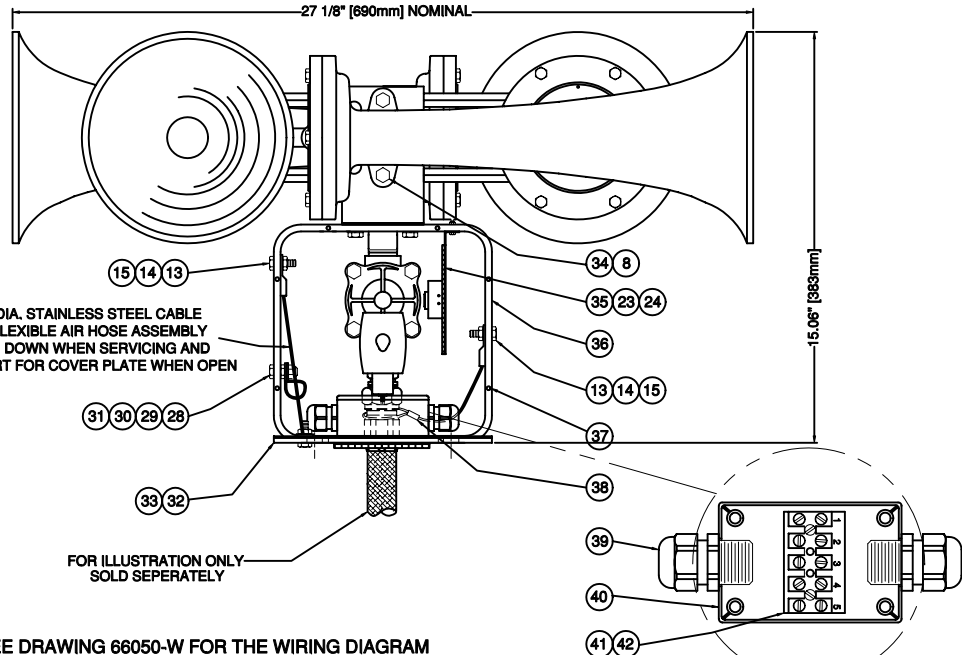
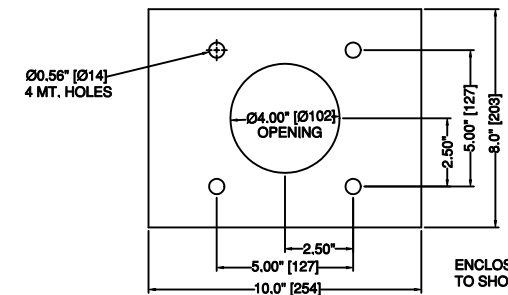
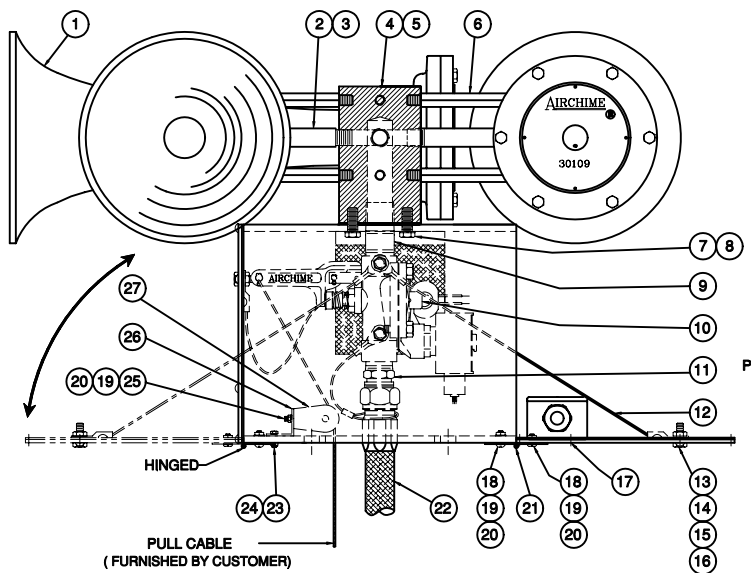
- Single tone, 311 Hz fundamental frequency, engineered to produce full harmonic contents up to 12 octave in order to enhance warning effectiveness
- Ideal for high-noise industrial areas
- Pole mounted steel enclosure for central mounting
- Fully enclosed and heated combination valve
- Heater is thermostatically controlled, 90 watts / 120 VAC
- Energy efficient with hermetically sealed stainless steel diaphragm assembly
- Will operate on a wide range of pressure without tuning or adjustment for years of trouble free service
- Constructed of high strength cast aluminum and stainless steel fasteners

\* Signal will produce a sound pressure level of approximately 70 dB @ 4 km in calm, cool conditions without topographical interference. Signal strength at distance can vary dramatically depending on environmental and geographical conditions. Please consult factory for more detailed information.

<b>Control:</b>	Manual, solenoid or combination valve
<b>SPL (Loudness) on Total:</b>	140 ± 1 dBA @ 1 meter
<b>Operating Medium:</b>	Air, nitrogen, CO <sub>2</sub> , 3/4" NPT inlet
<b>Air Consumption:</b>	44 L/Sec [96 SCFM] @ 7 bar [100 PSIG]
<b>Audibility:</b>	3.5 km on still air
<b>Fundamental Frequency:</b>	311 Hz ± 10 Hz
<b>Tone (Musical Note):</b>	D <sub>4</sub> sharp
<b>Operating Pressure:</b>	3 – 10 bar [50 – 150 PSI]
<b>Operating Temperature:</b>	-4°C to +85°C [-20°F to +185°F]
<b>Finish:</b>	Painted red (alkyd enamel)
<b>Degree of Protection:</b>	IP 54
<b>Basic Dimension:</b>	432x203x229mm [17x8x9"]
<b>Net Weight:</b>	26 kg [58 lbs]

DWG NO	66050	SH	1	REV	0	
REVISIONS						
REV	SHT	ZONE	ITEM	DESCRIPTION	DATE	APRVD

**AIR HORN SYSTEM ASSEMBLY WITH ONE AIR HORN REMOVED TO SHOW PARTS**



1/16" (1.5 mm) DIA. STAINLESS STEEL CABLE TO PREVENT FLEXIBLE AIR HOSE ASSEMBLY FROM FALLING DOWN WHEN SERVICING AND PROVIDE SUPPORT FOR COVER PLATE WHEN OPEN

FOR ILLUSTRATION ONLY SOLD SEPARATELY

JUNCTION BOX SCALE 2X TOP VIEW

SEE DRAWING 66050-W FOR THE WIRING DIAGRAM  
 HORN FUNDAMENTAL FREQUENCY: 311 Hz ±4%  
 SPL (LOUDNESS) ON TOTAL AT 1 METER: 138 dB TO 142 dB  
 ADJUSTABLE DEPENDING ON THE SET PRESSURE  
 OPERATING PRESSURE: 50-150 PSI (3-10 BAR)  
 CONTROL VALVE: 3/4" NPT PORTS, 120VAC, 6.1 WATTS POWER CONSUMPTION  
 HEATER CAPACITY: 90W, 120VAC

ALL DIMENSIONS ARE FOR REFERENCE ONLY, UNLESS OTHERWISE SPECIFIED.

REF	PART	DESCRIPTION	MATERIAL	SPECIFICATION	QTY
1	46015	MODEL K3-1 W/O BASE AIR HORN	ASSEMBLY	DWG NO. 46015	4
2	18157	3/8" NPT x 4" NIPPLE	STAINLESS STEEL	US, CSA CERTIFIED	4
3	66112	AIR FLANGE NUT	STAINLESS STEEL	UNS S30300	4
4	66110	FOUR WAY MANIFOLD	ALUMINUM 6061-T6	ASTM B209	1
5	66114	MANIFOLD GASKET	CORK / NEOPRENE	US, CSA CERTIFIED	1
6	66114	HEXAGONAL STUD	STAINLESS STEEL	UNS S30300	8
7	18201	H.H. CAP SCREW 3/8"-18 X 1"	STAINLESS STEEL	ASTM F593C	4
8	30122	LOCK WASHER 3/8"	STAINLESS STEEL	ASME B18	12
9	10595	3/4" NPT x 2" NIPPLE	STAINLESS STEEL	UNS S31600	1
10	18270-SF	3/4" NPT COMBINATION VALVE, 120 V	ASSEMBLY	DWG NO. 18270-SF	1
11	66568	STRAIGHT ADAPTER, 3/4" MJC TO 3/4" MNPT	STEEL ZINC CHROMATED	SAE J514	1
12	66052	1/16" DIAMETER STRANDED CABLE	STAINLESS STEEL	US, CSA CERTIFIED	3
13	13105	H.H. CAP SCREW 5/16"-18 X 1"	STAINLESS STEEL	ASTM F593C	3
14	66050	EYELET FOR 1/16" CABLE W. 5/16" STUD SIZE	STAINLESS STEEL	US, CSA CERTIFIED	5
15	40025	LOCK NUT 5/16"-18	STAINLESS STEEL	ASTM F594	3
16	18215	HEX NUT 5/16"-18	STAINLESS STEEL	ANSI B18	3
17	66901	P.H. SLOT MACH. SCREW 6-32 x 1/2"	STAINLESS STEEL	ANSI B18	4
18	15690	P.H. SLOT MACH. SCREW 10-24 x 1/2"	STAINLESS STEEL	ANSI B18	8
19	31041	LOCK WASHER #10	STAINLESS STEEL	ANSI B18	9
20	10408	HEX NUT 10-24	STAINLESS STEEL	ANSI B18	9
21	66033	2" x 3.2" CONTINUOUS HINGE	ASSEMBLY	US, CSA CERTIFIED	2

REF	PART	DESCRIPTION	MATERIAL	SPECIFICATION	QTY
22	66028	3/4" I.D. HOSE ASSY WITH SWIVEL ENDS	ASSEMBLY	DWG NO. 66028	1
23	10403	P.H. SLOT MACH. SCREW 10-24 x 5/8"	STAINLESS STEEL	ANSI B18	3
24	15634	LOCK NUT 10-24	STAINLESS STEEL	ANSI B18	3
25	66098	P.H. SLOT MACH. SCREW 10-24 x 3/8"	STAINLESS STEEL	ANSI B18	1
26	25635	ANGLE BRACKET	ZINC PLATED STEEL	COMMERCIAL	1
27	66058	TOP MOUNT BRACKET PULLEY	ASSEMBLY	US, CSA CERTIFIED	1
28	66214	SUPPORT CLAMP	ASSEMBLY	US, CSA CERTIFIED	1
29	30110	H.H. CAP SCREW 1/4"-20 x 7/8"	STAINLESS STEEL	ASTM F593C	1
30	11484	HEX NUT 1/4"-20	STAINLESS STEEL	ASTM F594	1
31	18114	LOCK NUT 1/4"-20	STAINLESS STEEL	ASTM F594	1
32	66040-CF	COVER PLATE	HOT ROLLED MLD. STEEL	CSA G40.21 300W	2
33	66040-G	COVER GASKET	CORK / NEOPRENE	US, CSA CERTIFIED	2
34	66300	NEX NUT 3/8"-16	STAINLESS STEEL	ASTM F594	8
35	18181	HEATER 90W/120V W. THERMOSWITCH	ASSEMBLY	DWG NO. 18181	1
36	66039	ENCLOSURE TO HOUSE SOLENOID	HOT ROLLED MLD. STEEL	CSA G40.21 300W	1
37	15900	P.H. SLOT MACH. SCREW 6-32 x 1/2"	STAINLESS STEEL	ANSI B18.8	16
38	66054	LOOP SLEEVE FOR 1/16" CABLE	ZINC PLATED COPPER	US, CSA CERTIFIED	1
39	67969	1/2" NPT LIQUID TIGHT CONNECTOR	PLASTICS	US, CSA CERTIFIED	2
40	18157	JUNCTION BOX	PLASTICS	US, CSA CERTIFIED	1
41	18210	TERMINAL BLOCK 5 POLES, 20 A	ASSEMBLY	US, CSA CERTIFIED	1
42	66033	R.H. SLOT MACH. SCREW 6-32 x 5/8"	STAINLESS STEEL	ANSI B18.8	2

**CONFIDENTIAL**  
 INFORMATION CONTAINED HEREIN IS CONFIDENTIAL, IT IS THE PROPERTY OF AIRCHIME MFG. CO. LTD., IT IS TO BE USED SOLELY FOR THE PURPOSE PROVIDED, AND IT IS NOT TO BE DISCLOSED TO OTHERS WITHOUT THE PRIOR WRITTEN CONSENT OF AIRCHIME MANUFACTURING COMPANY LIMITED.  
 © CopyRight Airchime Mfg. Co. Ltd.

CONTRACT NUMBER:  
 CUSTOMER:  
 DRAWN BY: S.S. DATE (YY-MM-DA): 2003-08-14  
 CHECKER: S.F. APPROVED: S.F.  
 DRAWING STATUS: CONTROLLED & ACTIVE  
 TYPE OF DRAWING: ASSEMBLY

**AIRCHIME MANUFACTURING CO. LTD.**  
 LANGLEY, B.C. CANADA  
 V4W 3S8

**MODEL K4-1-EN-H-120 AIR HORN**  
**WIDE AREA WARNING STATION**

SIZE: NSCM 36575  
**66050**  
 REVISION: 0

SCALE: NONE UNIT WT: 58 lbs (26 Kg) SHEET: 1 OF 1