

### Model D-330 Air Horn

A new model from Kahlenberg, the D-330 Air Horn has been designed to minimize air consumption, and maximize sound pressure output, while retaining the superior finish and durable construction Kahlenberg Air Horns are famous for. The D-330 is lighter, and smaller than other horns of similar output, yet is certified to IMO Requirements for vessels up to 75 Meters in length, and can be powered by very small compressed air systems to minimize associated cost and space requirements on board.



#### TECHNICAL DATA

Fundamental Frequency: 330 & 280 Hz

S.P.L. (1/3 Octave @ 1 Meter): 133 dB

S.P.L. (dB(A)): 136 dB

Air Consumption:

18 C.F.M. @ 100 p.s.i., 8.4 l/s @ 7 bar

Air Pressure Required:

50 to 200 p.s.i., 3.5 to 14 bar  
(Higher pressures with optional regulators)

Electrical Power Required:

Any standard A.C. or D.C. Voltage

Material: Cast Bronze and Spun Brass

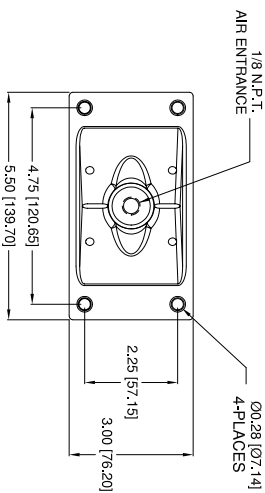
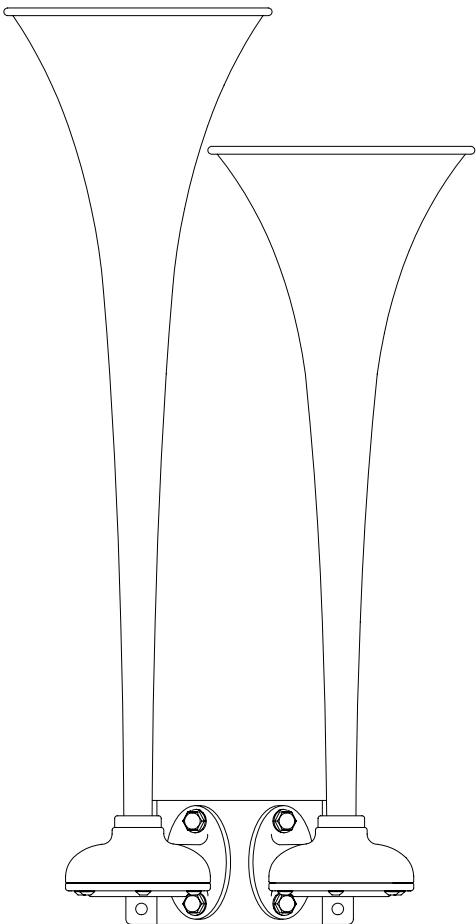
Net Weight: 9 lbs., 4.3 kg.,

Finish:

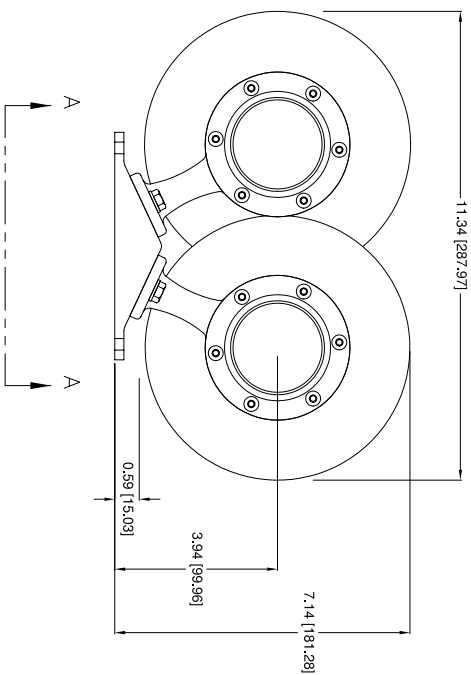
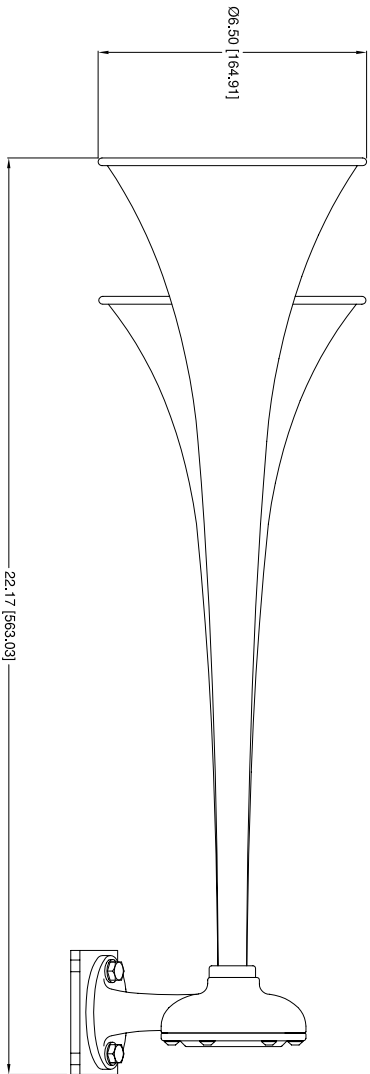
TGIC Sky White Powdercoat or  
Chrome Plate

- **FOR VESSELS LESS THAN 75 METERS IN LENGTH**
- **MEETS OR EXCEEDS IMO REQUIREMENTS**
- **LOW AIR CONSUMPTION, OPERATES ON A WIDE RANGE OF AIR PRESSURE**
- **HIGHLY RELIABLE, VIRTUALLY NO MAINTENANCE**
- **TGIC SKY WHITE POWDERCOAT FINISH OR CHROME PLATE**

REV.	BY	DATE	DESCRIPTION	APP'D.



VIEW "A" "A"



**TECHNICAL DATA**

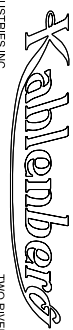
Frequency: 330 Hz & 280 Hz  
 Sound Pressure Level (1/3 octave at 1 meter): 133.2 dB  
 Sound Pressure Level (dB(A) @ 1 meter): 136.0 dB  
 Air Consumption: 18.2 C.F.M. @ 100 P.S.I.  
 Air Pressure Req: 50 to 200 P.S.I.  
 Electric Power: N/A  
 Material: Spun Brass and Cast Bronze  
 Net Weight: 9.00 Lbs.  
 Shipping Weight: 14 Lbs.

**CONFIDENTIAL**

INFORMATION CONTAINED HEREIN IS CONFIDENTIAL. IT IS THE PROPERTY OF KAHLBERG INDUSTRIES INC. IT IS TO BE USED SOLELY FOR THE PURPOSE PROVIDED, AND IT IS NOT TO BE DISCLOSED TO OTHERS WITHOUT THE PRIOR WRITTEN CONSENT OF KAHLBERG INDUSTRIES INCORPORATED.

© Copyright Kahlberg Ind. Inc. 2010

KAHLBERG INDUSTRIES INC. TWO RIVERS, WISCONSIN 54241



**OUTLINE DIMENSIONS  
D-330 AIRHORN**

DR.	DATE	CKD.	SCALE	DRWG. NO.	REV.
ZJN	03/29/11	EMK	N.T.S.	3-6656	